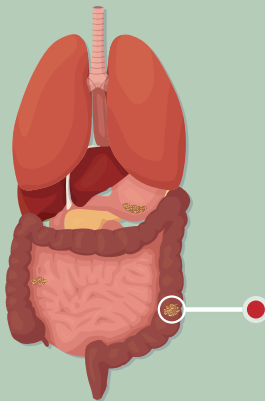


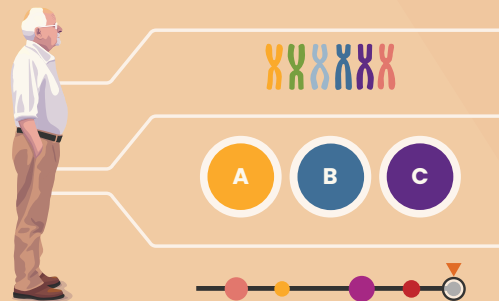
# Checklist of tools for optimising treatment and management of advanced NETs

## Tumour-related factors

- ✓ Primary site and stage
- ✓ Grade, differentiation, proliferation index
- ✓ Extent and location of metastases
- ✓ Tumour growth rate
- ✓ PET imaging characteristics



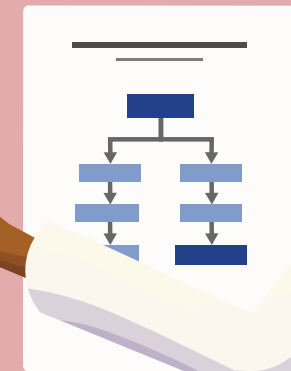
## Patient-related factors



- ✓ History
  - predisposition
  - comorbidities
- ✓ Symptoms
  - due to tumour volume
  - due to functioning syndrome
- ✓ Preferences
  - treatment goals
- ✓ Quality of life

## Treatment-related factors

- ✓ Systemic treatments
- ✓ Liver-directed therapy
- ✓ Treatment guidelines
- ✓ Evidence base
- ✓ Expected cumulative toxicity



**When considering the tools to optimise treatment and management of people living with advanced NETs, always integrate efficacy, QoL, and both short- and long-term toxicity in addition to tumour-related factors when choosing the treatment strategy.**

NET, neuroendocrine tumour; QoL, quality of life; PET, positron emission tomography

This programme is developed by Prof. Emily Bergsland (University of California–San Francisco (UCSF), USA) and Asst Prof. Louis de Mestier (Paris-Cité University and Beaujon Hospital, France) on behalf of NET CONNECT, an international group of experts in the field of neuroendocrine tumours and is an initiative of COR2ED. The programme is supported by an independent educational grant from Ipsen. The programme is therefore independent; the content is not influenced by the supporter and is under the sole responsibility of the experts. The views expressed are the personal opinions of the experts. They do not necessarily represent the views of the experts' institutions.

**COR2ED**  
THE HEART OF MEDICAL EDUCATION

Go to [COR2ED.COM](https://COR2ED.COM) for more information and resources

